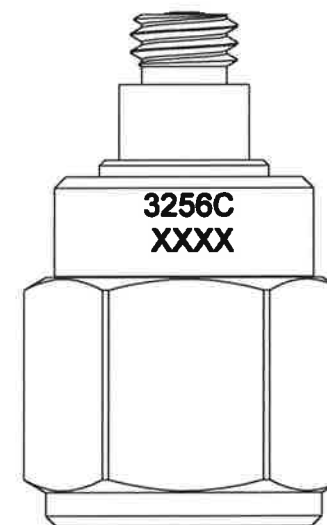
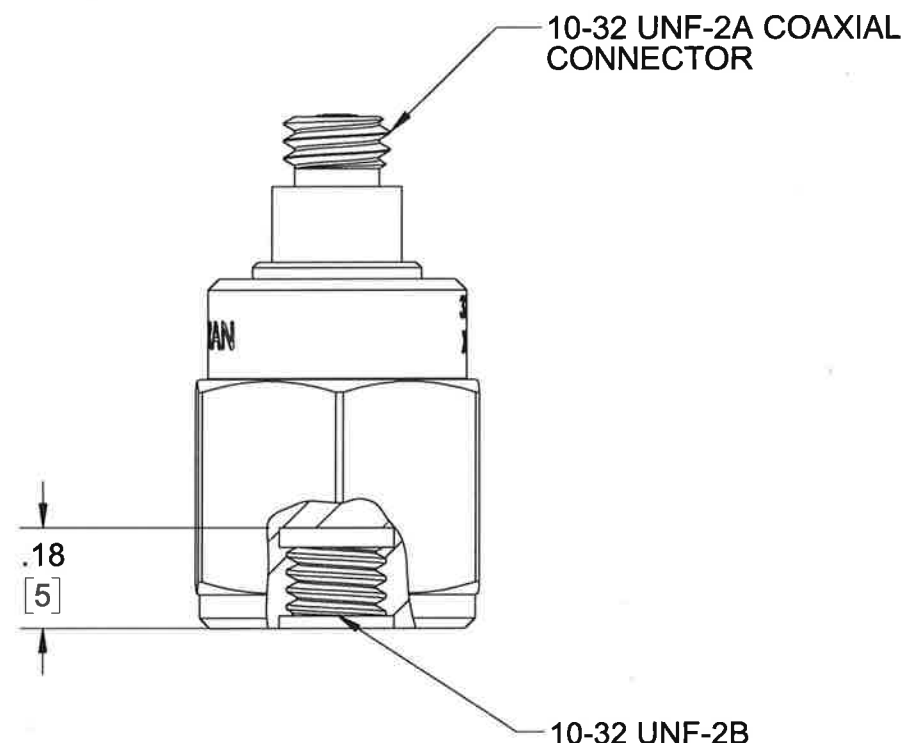
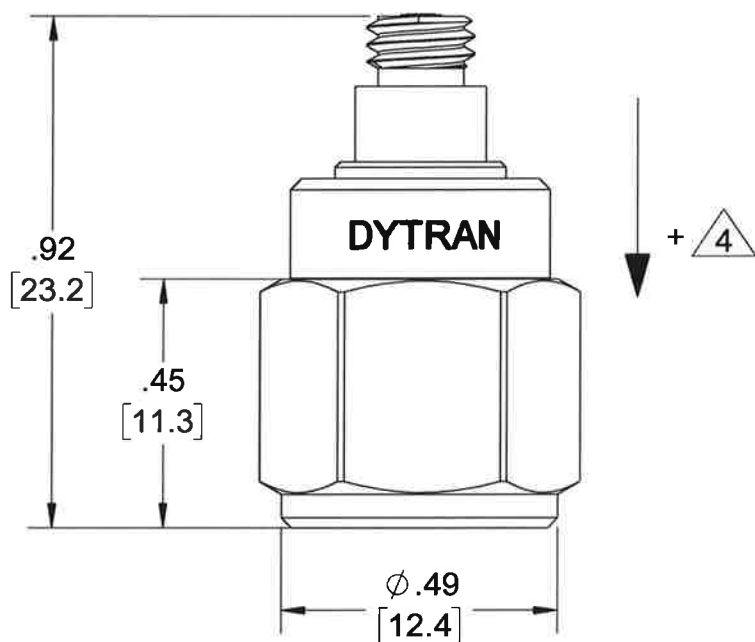
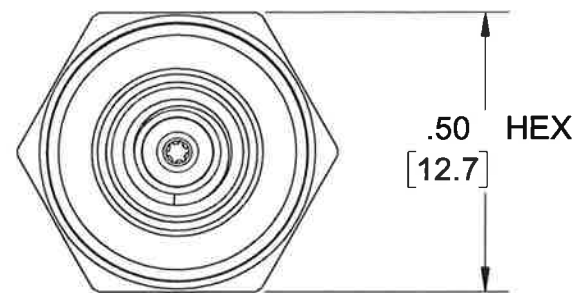


PROPRIETARY AND CONFIDENTIAL

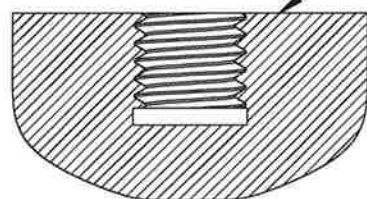
THE INFORMATION CONTAINED IN THIS DRAWING IS THE SOLE PROPERTY OF DYTRAN INSTRUMENTS INC. ANY REPRODUCTION IN PART OR AS A WHOLE WITHOUT THE WRITTEN PERMISSION OF DYTRAN INSTRUMENTS INC. IS PROHIBITED

REVISIONS

REV.	ECN	DESCRIPTION	BY/DATE	CHK	APPR
A	4930	INITIAL RELEASE	JS 12/04/07	RA	PML
B	11745	MOVED MARKING FROM HEX TO DIAMETER.	NDC 02/25/15	LN	DV
C	11835	REDESIGNED SEE ECN	RA, 05/18/15	EM	LN
D	13151	ADDED NOTES 1 THRU 4 AND; ZONE C4 ADDED DRAWING REF FOR POSITIVE OUTPUT DIRECTION	LA 12/07/16	RA	LA



MOUNTING RECOMMENDATIONS:  
 PREPARATIONS: SELECT SURFACE FLAT TO .001 TIR  
 TAP 10-32 UNF-2B X .200 MIN THD DEPTH.  
 RECOMMENDED TORQUE: 10-12 LB-IN



- 4 ARROW INDICATES DIRECTION OF ACCELERATION FOR POSITIVE OUTPUT.
  - 3 MATES WITH 6013AXX, 6019AXX
  - 2. MATERIAL: TITANIUM
  - 1. WEIGHT: 10 GRAMS APPROXIMATELY
- NOTES: UNLESS OTHERWISE SPECIFIED

UNLESS OTHERWISE SPECIFIED:  
 INTERPRET DIM & TOL PER ASME Y14.5M - 1994.  
 REMOVE BURRS.  
 COUNTERSINK INTERNAL THDS 90° TO MAJOR DIA.  
 CHAM EXT THDS 45° TO MINOR DIA.  
 THD LENGTHS AND DEPTHS ARE FOR MIN FULL THDS.  
 DIMENSIONS APPLY AFTER FINISHING.

ALL MACHINED SURFACES.  
 TOTAL RUNOUT WITHIN .005.  
 BREAK SHARP EDGES .005 TO .010.  
 MACHINED FILLET RADII .005 TO .015.  
 WELDING SYMBOLS PER AWS A2.4.  
 ABBREVIATIONS PER MIL-STD-12.

UNLESS OTHERWISE SPECIFIED:  
 DIMENSIONS ARE IN INCHES  
 DIMENSIONS IN BRACKETS [ ] ARE IN MILLIMETERS TOLERANCES ARE:

DECIMALS	METRIC	ANGLES
.XX ±.03	.X ± 0.8	±1°
.XXX ±.010	.XX ±0.25	

APPROVALS		DATE
ORIG	JS	12/04/07
CHK	RA	12/06/07
APP	PML	12/06/07

DO NOT SCALE DRAWING

THIRD ANGLE PROJECTION

**DYTRAN** INSTRUMENTS, INC. Chatsworth, CA

**MASTER**  
 ONLY IF IN RED

TITLE: **OUTLINE/INSTALLATION, MODEL 3256C**

SIZE <b>B</b>	CAGE CODE <b>2W033</b>	DWG NO <b>127-3256C</b>	REV <b>D</b>
---------------	------------------------	-------------------------	--------------

SCALE: 2:1 SHEET 1 OF 1

<b>MODEL NUMBER</b> <b>3256C</b>	<b>PERFORMANCE SPECIFICATION</b>	<b>DOC NO.</b> <b>PS3256C</b>
-------------------------------------	----------------------------------	----------------------------------

	<b>Accelerometer, Charge Mode</b>	REV D, ECN 14805, 01/04/18
--	-----------------------------------	----------------------------



- **HERMETICALLY SEALED**
- **HIGH CHARGE OUTPUT**
- **ROBUST DESIGN**

**PHYSICAL**

Weight  
Connector [1]  
Housing  
Sensing Element

	ENGLISH		SI	
Type	0.35	oz	10.0	grams
Material	Coaxial		Coaxial	
Material	Titanium		Titanium	
Isolation	Titanium		Titanium	
Mode	Case Grounded		Case Grounded	
	Ceramic		Ceramic	
	Shear		Shear	

**PERFORMANCE**

Sensitivity, ± 15% [2]  
Acceleration Range [3]  
Frequency Range, ±5%  
Resonance Frequency  
Linearity [4]  
Transverse Sensitivity Max

	15	pC/g	1.53	pC/m/s <sup>2</sup>
	[3]	Gpeak	[3]	m/s <sup>2</sup> peak
	[5] 5000	Hz	[5] 5000	Hz
	32	kHz	32	kHz
	±1	%	±1	%
	5	%	5	%

**ENVIRONMENTAL**

Shock Max  
Vibration Max  
Operating Temperature  
Seal  
Magnetic Sensitivity at 100 Gauss  
Base Strain Sensitivity

	5000	g pk	49050	m/s <sup>2</sup>
	600	g pk	5886	m/s <sup>2</sup>
	-60 to +375	°F	-51 to +190	°C
	Hermetic		Hermetic	
	0.00007	g/Gauss	0.0006867	m/s <sup>2</sup> /Gauss
	0.05	g/µε	0.4905	m/s <sup>2</sup> /µε

**ELECTRICAL**

Capacitance, nom

	975	pF	975	pF
--	-----	----	-----	----

**This family also includes:**

Model	Sensitivity (pC/g)	Range (Gpeak)	Resolution (Grms)	Oper. Temp(°F)

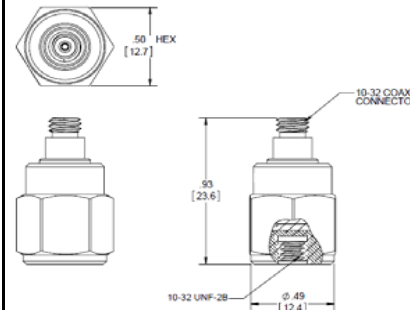
Please, refer to the performance specifications of the products in this family for detailed description

**Supplied Accessories:**

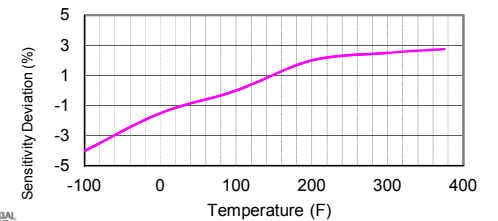
- 1) Model 6200 Mounting Stud
- 2) Accredited Calibration Certificate (ISO 17025)

**Notes:**

- [1] Mates with Dytran cable Model 6013AXX or 6019AXX (XX= Length in feet).
- [2] Measured At 100 Hz, 1 Grms per ISA RP 37.2
- [3] Depends On the Gain Setting Of The Charge Amplifier Used
- [4] Measured using zero-based best straight line method, % of F.S. or any lesser calibrated range.
- [5] Low Frequency Response Is the Function Of the Discharge Time Constant Of The Charge Amplifier Used. Please, Refer To The Plot Below For Frequency Response For Different Time Constants



TYPICAL SENSITIVITY RESPONSE OVER TEMPERATURE



TYPICAL LOW FREQUENCY RESPONSE

